

Domain-Driven Design

Methodik und Entwurfsmuster zur Umsetzung komplexer Problemstellungen als Softwaremodell

Übersicht

Einführung

Motivation

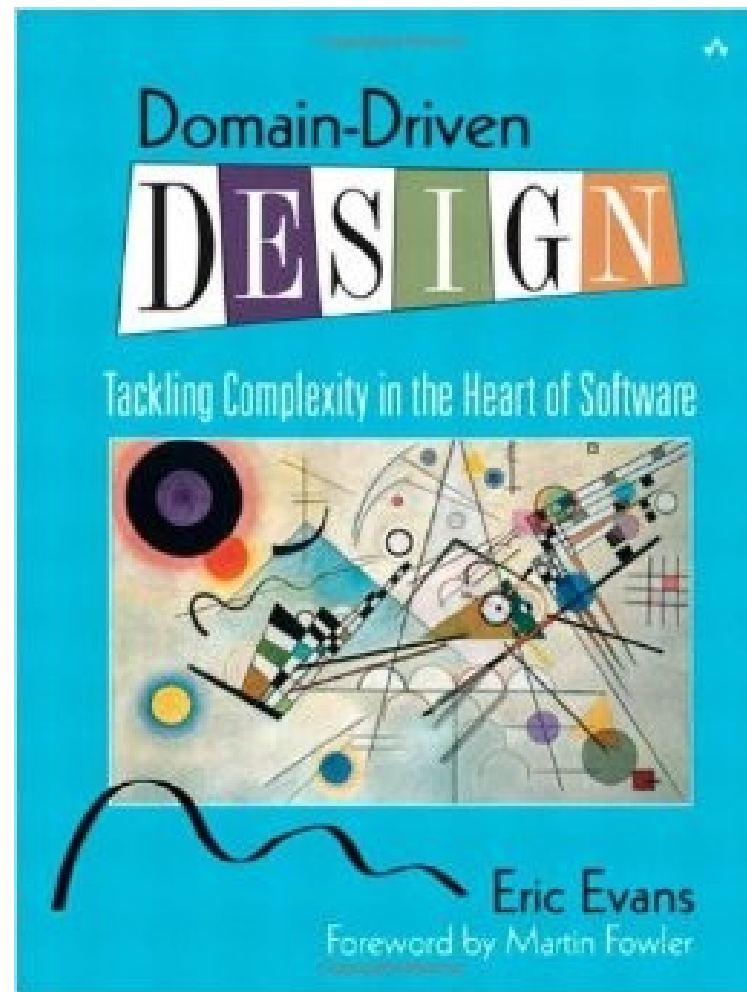
Domänenmodell

Methodik

Entwurfsmuster

Handhabung umfangreicher Modelle

Domain Driven Design (DDD)



The Project Management Tree Swing Cartoon

Experte

Entwickler



How the customer explained it



How the project leader understood it



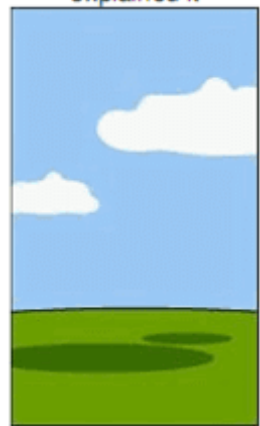
How the engineer designed it



How the programmer wrote it



How the sales executive described it



How the project was documented



What operations installed



How the customer was billed



How the helpdesk supported it

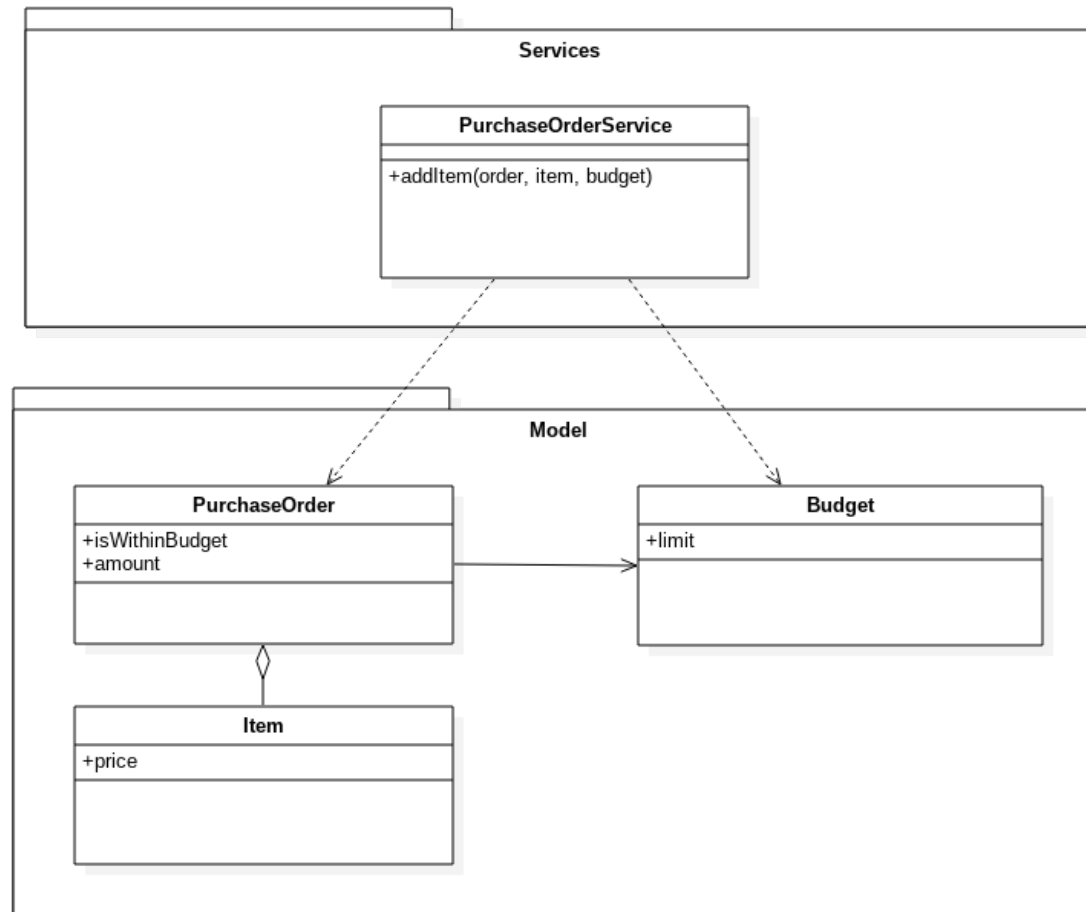


What the customer really needed

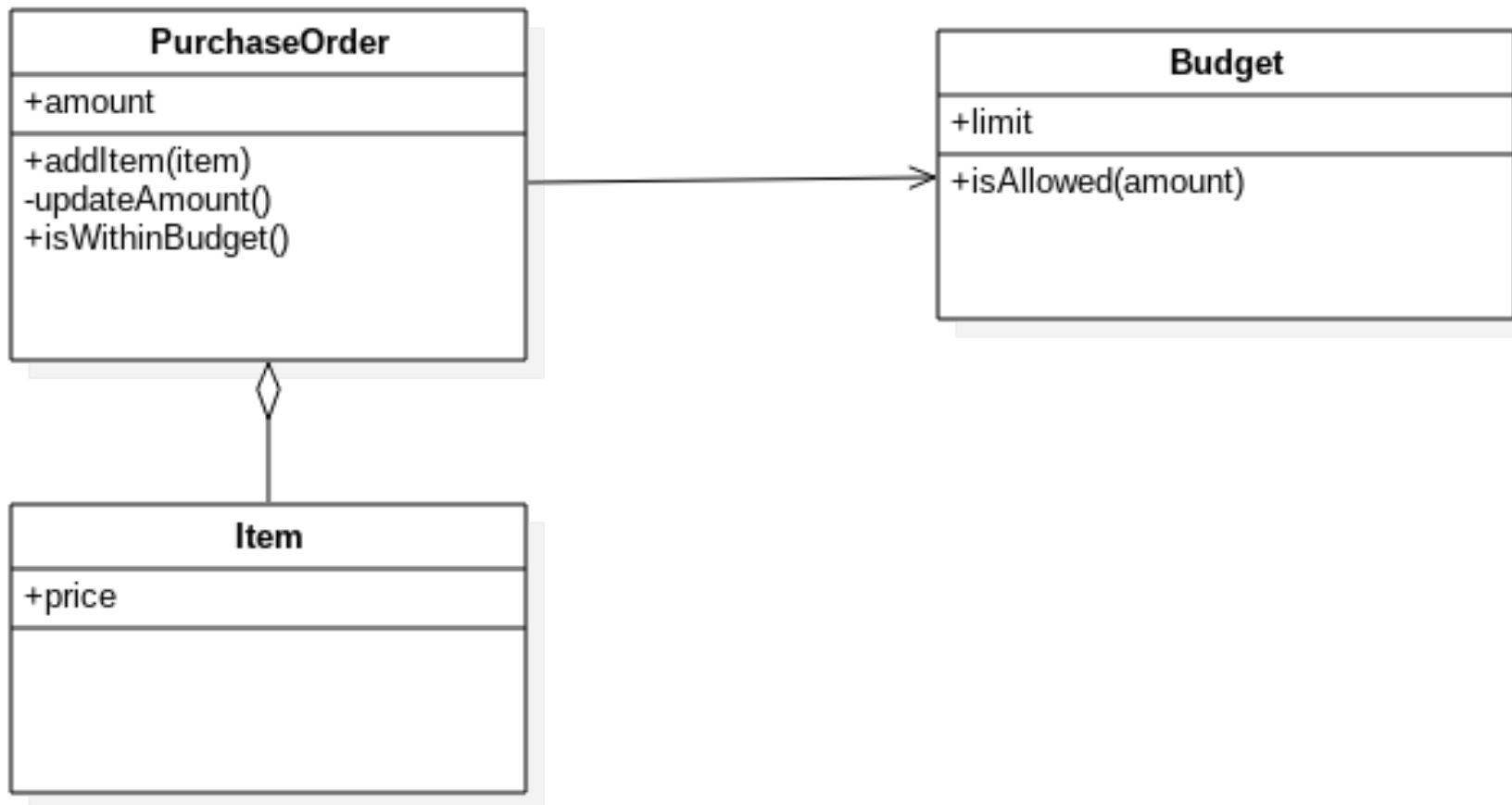
Domäne

Quelle: <https://www.tamingdata.com/2010/07/08/the-project-management-tree-swing-cartoon-past-and-present/>

Anemic Domain Model



Rich Domain Model



Ubiquitäre Sprache

Web-Shop

Entwickler

- SMTP
- Tabelle
- Boolean
- Umsatzsteuer

Experte

- E-Mail Benachrichtigung
- Bestellung
- ???
- VAT

~~Agile~~ ~~Deadline Driven Development (DDD)~~

Methodik und Entwurfsmuster zur Umgestaltung komplexer Problemstellungen als Softwaremodell 3 Tage vor der Deadline, nachdem die Entwickler die Anforderungen der Kunden endlich verstanden haben

Entitäten



Quelle: <https://commons.wikimedia.org/wiki/File:Nummernschilder.JPG>



Quelle: https://de.wikipedia.org/wiki/Datei:Semperoper_dresden.jpg

Identitäten



Quelle: https://commons.wikimedia.org/wiki/File:A_license_plate.jpg

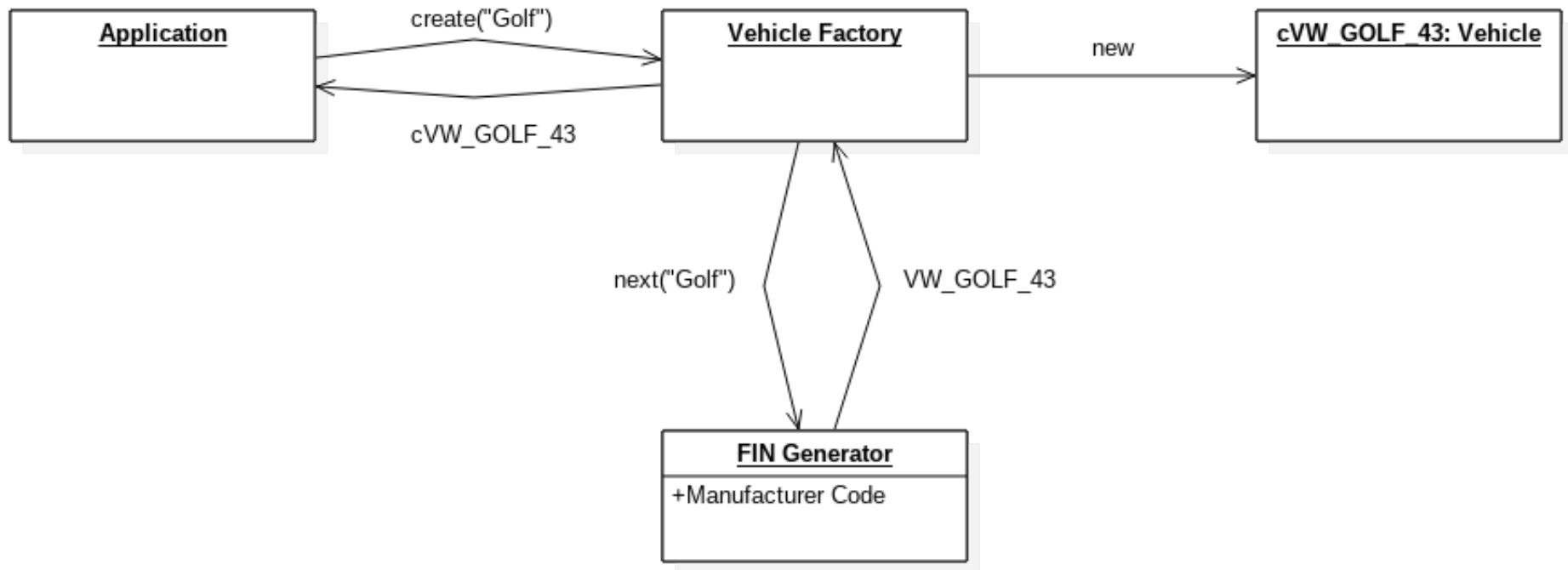


Quelle: https://commons.wikimedia.org/wiki/File:VIN_-_Fahrgestellnummer_IMG_0470.JPG

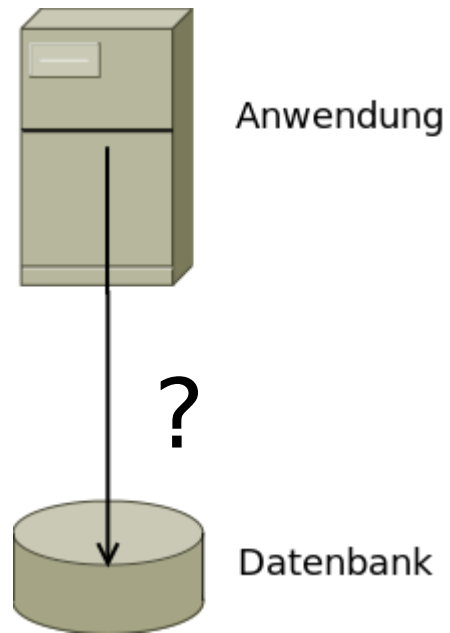


Quelle: <https://commons.wikimedia.org/wiki/File:Parcelusarus2008.jpg>

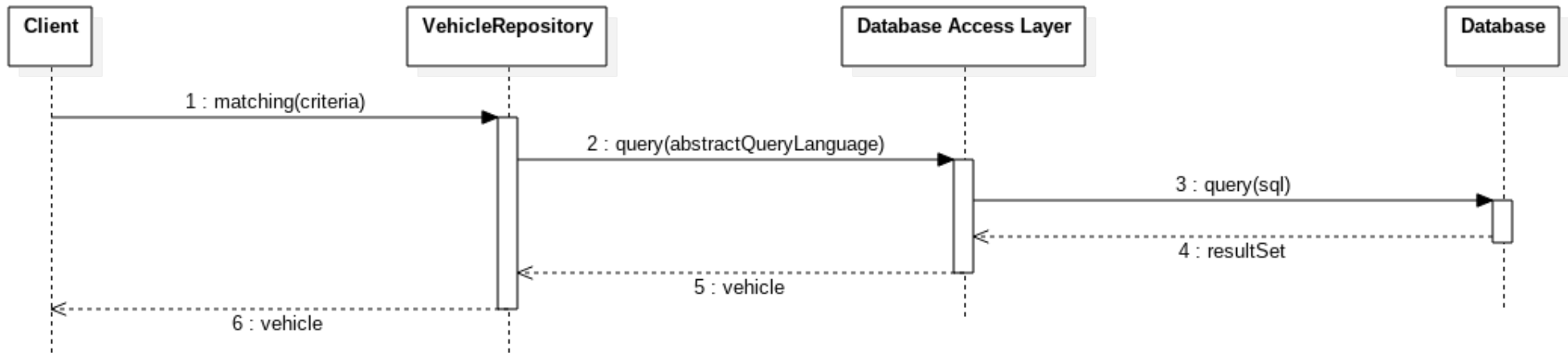
Factories



Repositories



Repositories



Wertobjekte

Das Selbe?



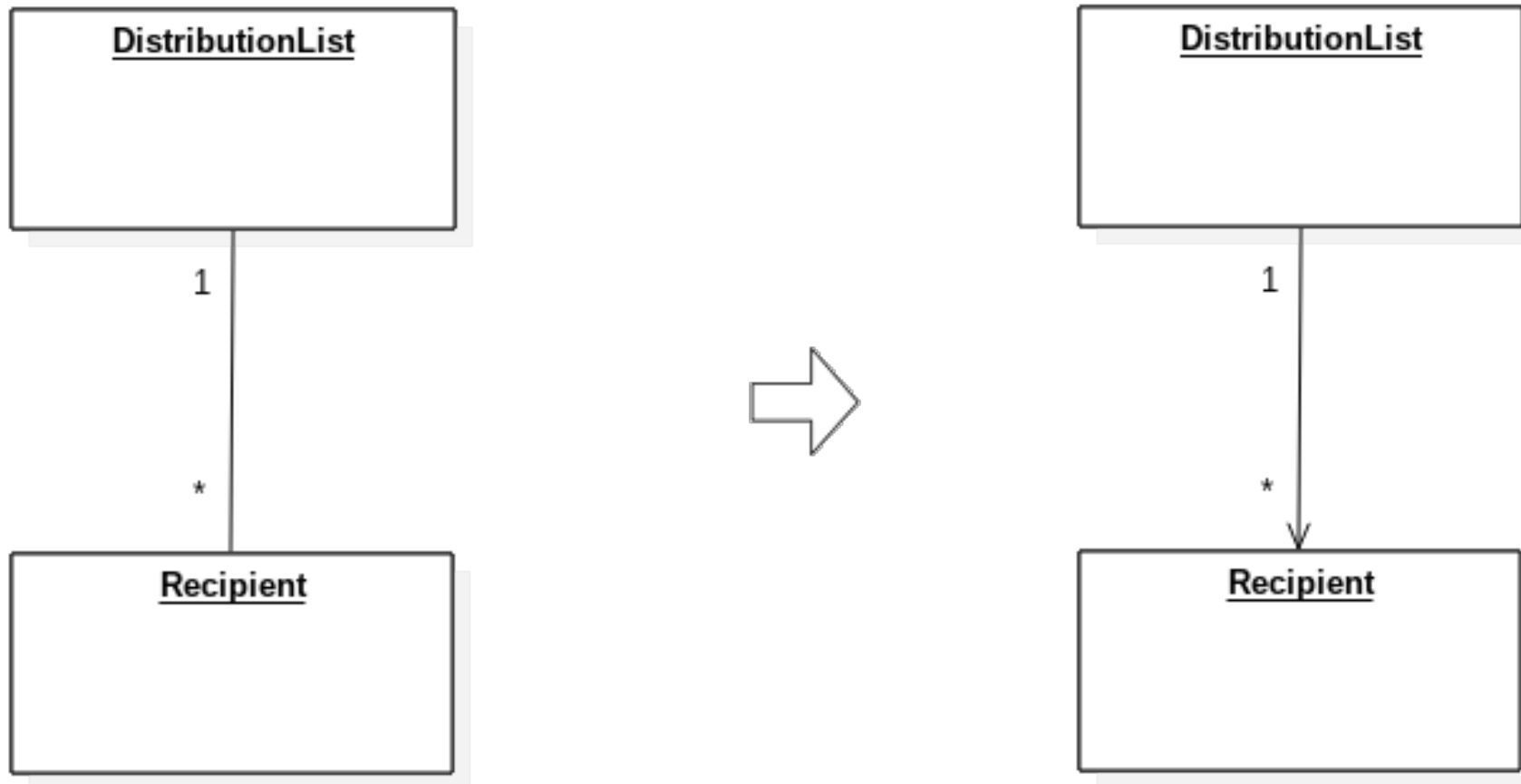
Quelle: https://commons.wikimedia.org/wiki/File:A_license_plate.jpg

Das Gleiche?

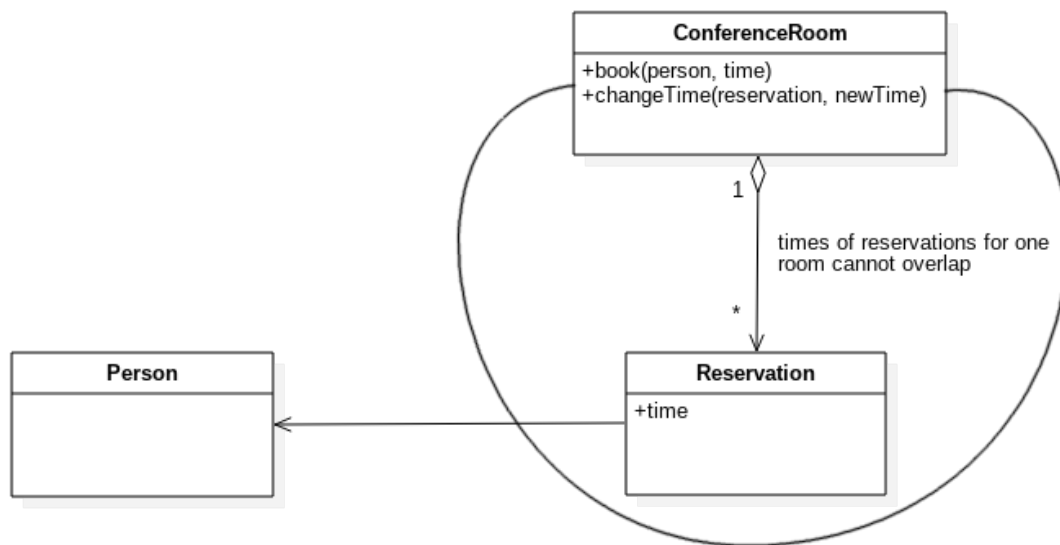
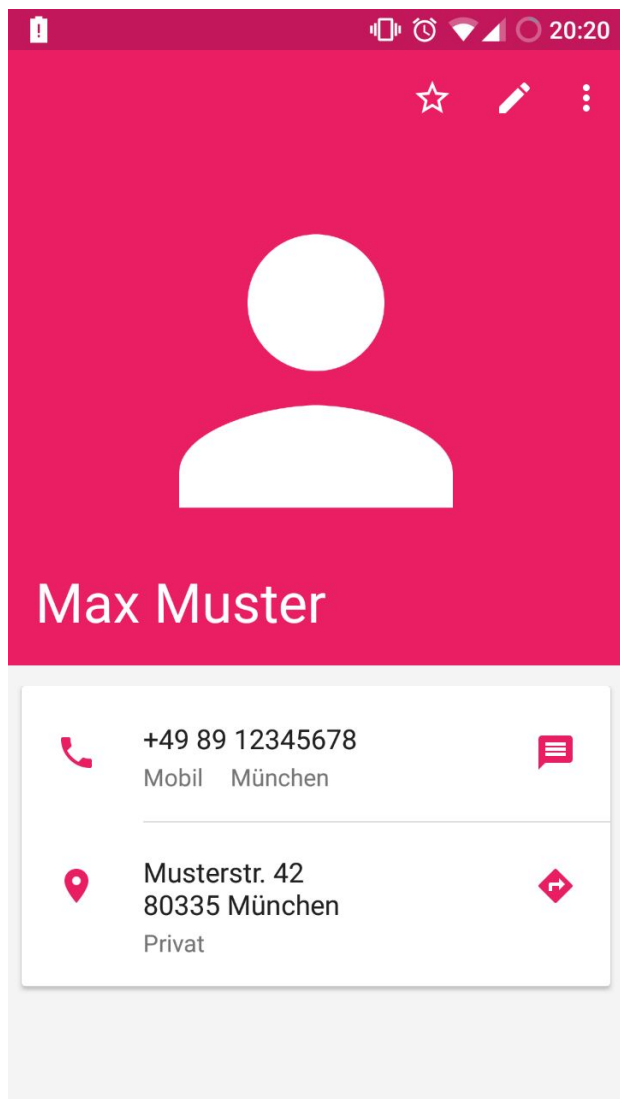


Quelle: https://commons.wikimedia.org/wiki/File:Colouring_pencils.jpg

Assoziationen



Aggregate

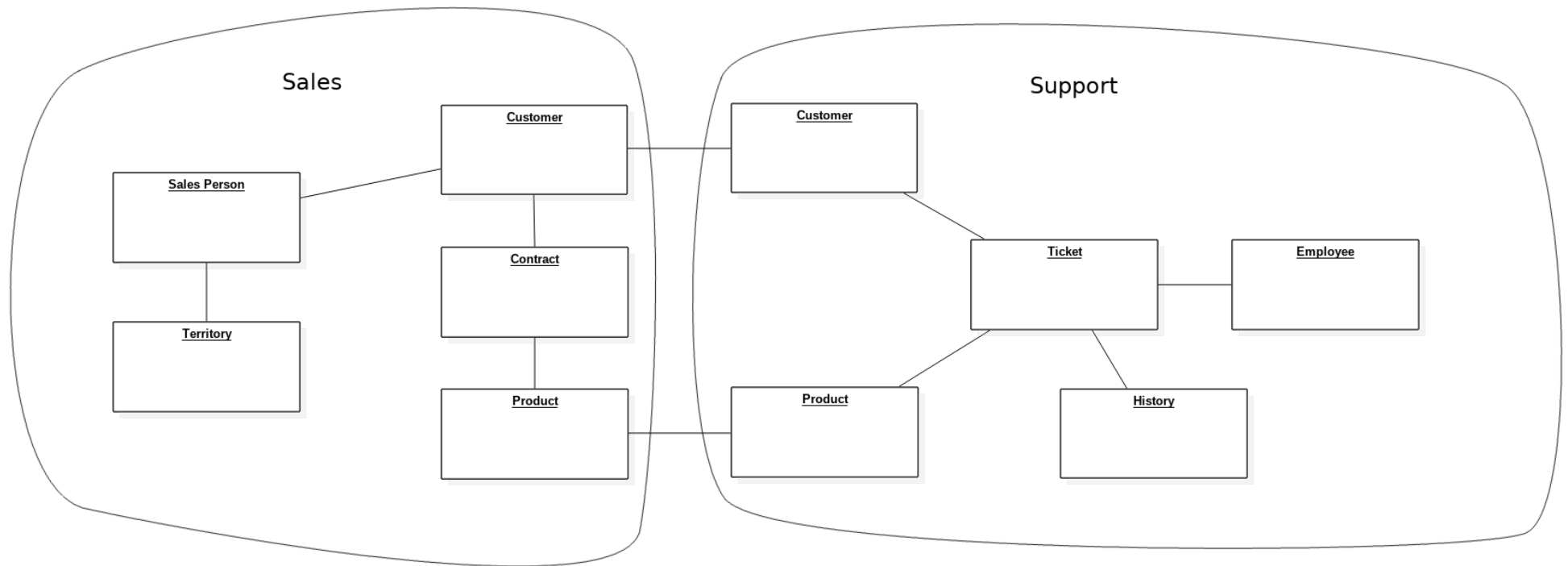


Services



Quelle: [https://de.wikipedia.org/wiki/Datei:DHL_Freight_MB_Atego_Berlin_\(20161209_120354-2\).jpg](https://de.wikipedia.org/wiki/Datei:DHL_Freight_MB_Atego_Berlin_(20161209_120354-2).jpg)

Bounded Context



Fazit & Fragen

Vielen Dank für Ihre Aufmerksamkeit!